





C3 Generative AI for Oracle NetSuite

Supercharge Oracle NetSuite Investments

C3 Generative AI for Oracle NetSuite is a unified knowledge source that empowers enterprise users to quickly access and act upon data and insights stored across Oracle NetSuite Investments.

 <p>Rapid Access</p> <p>to relevant, critical, and high-value insights previously siloed across disparate datastores, applications, and information systems</p>	 <p>Domain Specific</p> <p>models combining industry and functional expertise to help enterprises achieve critical business outcomes</p>	 <p>Enterprise Grade</p> <p>data security, access controls and flexible deployment allow enterprises to meet strict security and privacy requirements</p>	 <p>Future Proof</p> <p>investments with a model-agnostic solution architecture that offers multi-LLM support and integrates with existing IT system</p>
---	--	---	--

Organizations with existing Oracle NetSuite investments need deep subject matter expertise to find the data and analytics stored across Oracle NetSuite systems. Finance, accounting, and human resources teams find it increasingly complex and time-consuming to navigate disparate and large volumes of data and locate relevant insights.

C3 Generative AI for Oracle NetSuite enhances productivity and streamlines finance, accounting, and human resources operations through rapid access to critical insights. Users can ask questions in natural language and receive accurate answers ranging across reporting guidelines, quarterly reports, general ledger entries, tax records, employee records, audit reports, and reconciliation notes.

C3 Generative AI for Oracle NetSuite is an enterprise-ready solution with support across structured and unstructured data, an LLM-agnostic architecture, deterministic responses with source references, and granular access controls. C3 Generative AI for Oracle NetSuite offers rapid configurability with a prebuilt Oracle NetSuite connector and finance, human resources, and supply chain domain object models.

Use Cases

- **Quickly access insights** anywhere from in your Oracle NetSuite investments including quarterly reports, expense guidelines, customer service logs, and ticket activity
- **View information on financial plans in one place** with instant access to forecasts, journal entries for accounts payables and receivables, and changes in headcount
- **Expedite accounting operations** by enabling Accounting teams to rapidly reconcile journal entries, search for transaction variances, and analyze intercompany transactions
- **Optimize financial forecasting** with full visibility to revenue plans, budget templates, and historical forecasts
- **Enable operational efficiency** with increased visibility across multiple subsidiaries and business units, performance insights, and regulatory requirements
- **Get holistic financial management** through instant access to systems for accounting, financial management, inventory management, and human resources

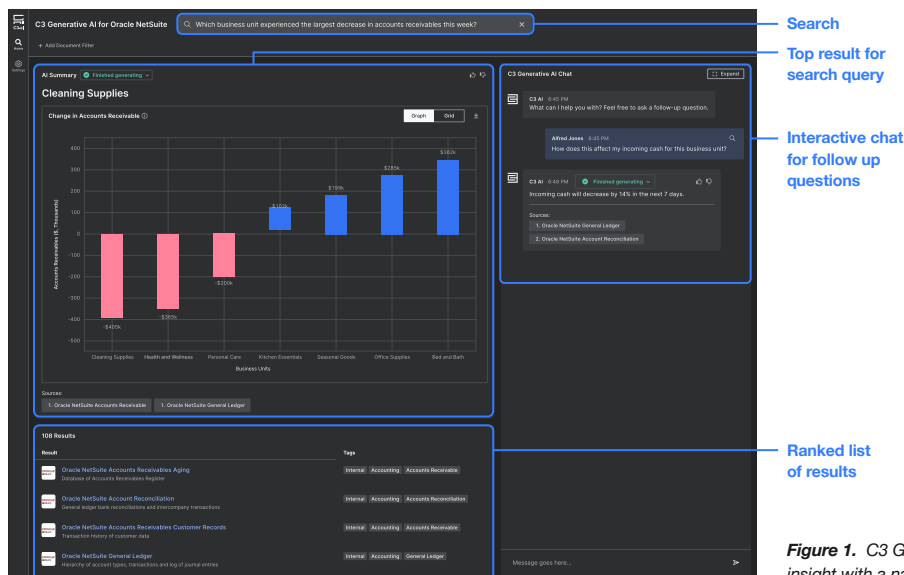


Figure 1. C3 Generative AI for Oracle NetSuite accelerates time to insight with a natural language search and chat interface.

Ready to Deploy Today, Results in 12 Weeks or Less

Visit C3.ai/Generative-AI